

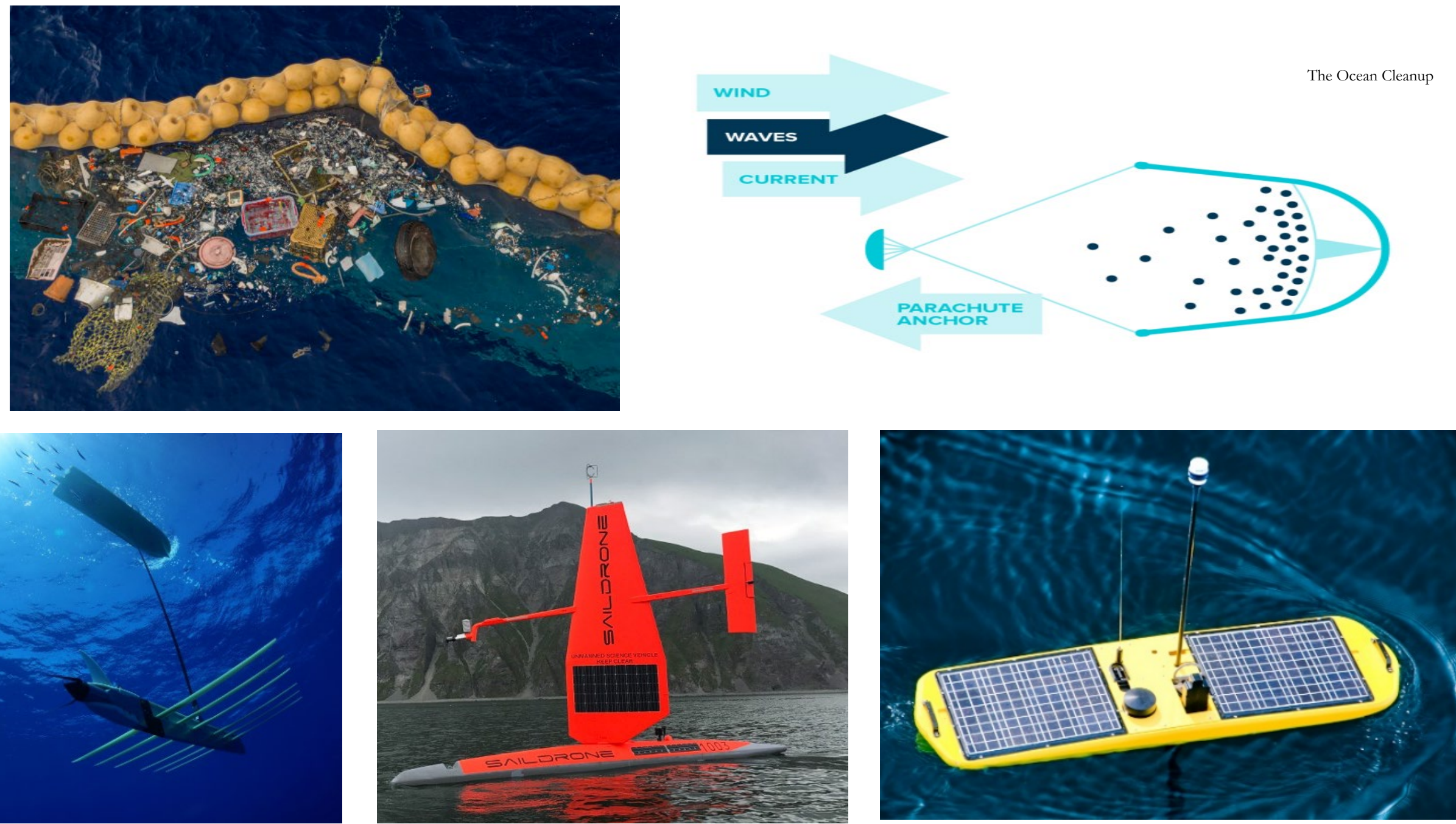
# Intelligent Observing and Multiscale Modeling for Ocean Exploration and Sustainable Utilization

P.F.J. Lermusiaux, P.J. Haley, Jr., C. Mirabito, and C. Dahill (MIT-MSEAS; Cambridge, MA, USA)



## Background

For intelligent ocean exploration and sustainable ocean utilization, the need for smart autonomous underwater vehicles, surface craft, and small aircrafts is rapidly increasing. Applications include scientific studies, solar-wind-wave energy harvesting, transport and distribution of goods, naval operations, security, acoustic surveillance, communication, search and rescue, marine pollution, ocean cleanup, conservation, fisheries, aquaculture, mining, and monitoring and forecasting. Designing optimal paths leads to cost savings, longer operational time, and environmental protection.



## MIT Portugal Project Goals

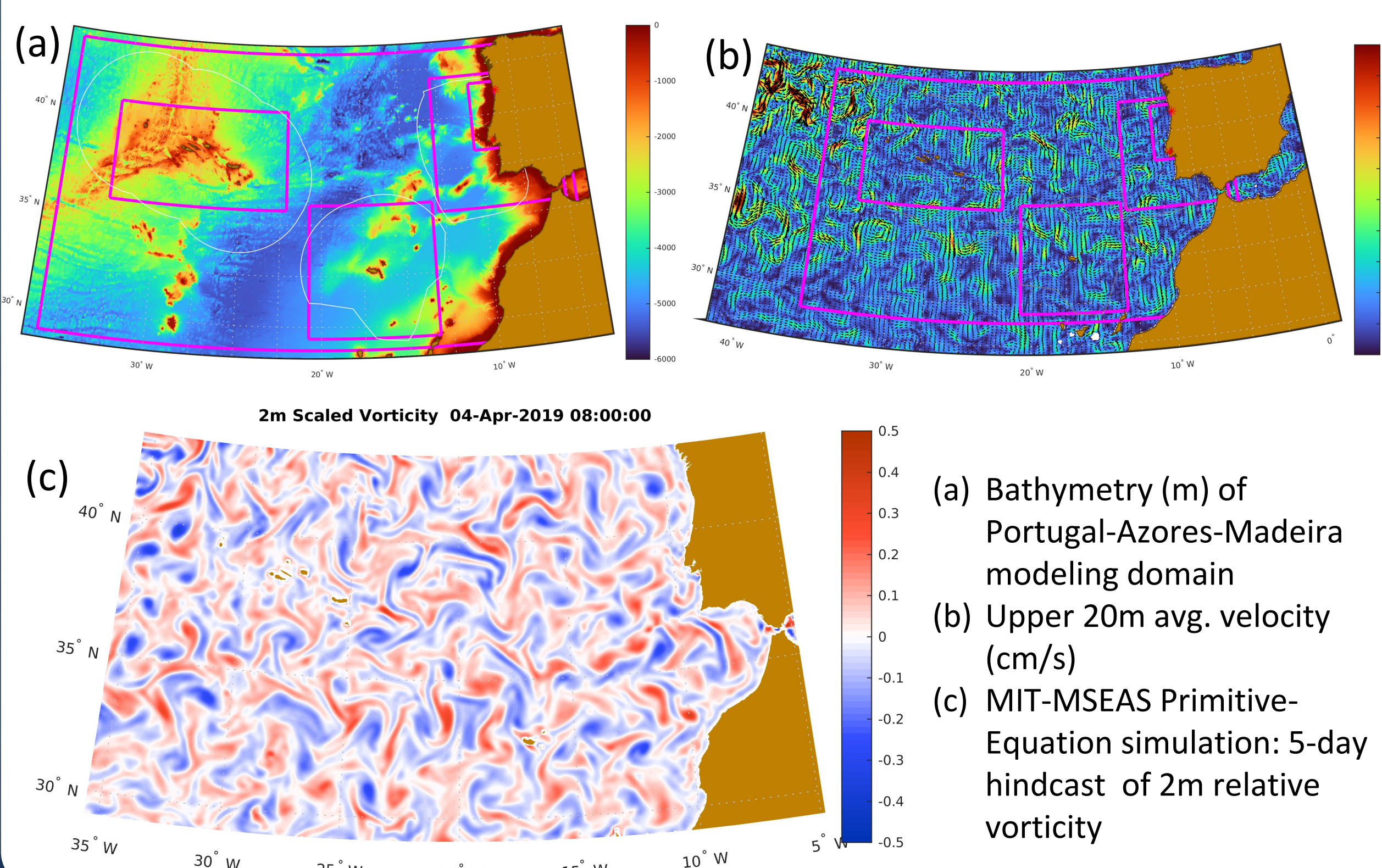
Further develop and apply our exact PDE-based planning theory and data-driven ocean modeling methodology to optimize the efficiency and endurance of ocean vehicles:

- Develop and apply our optimal planning theory and methodology to increase the efficiency of surface craft and underwater vehicles operating in uncertain dynamic ocean conditions.
- Implement and apply our rigorous theory and schemes for energy-optimal path planning and risk minimization under realistic ocean conditions
- Develop and evaluate mission planning for optimal environmental energy harvesting and optimal dynamic ocean cleanup
- Develop information-optimal theory for efficient scientific exploration and Bayesian machine learning of ocean model parameterizations and turbulence closures.

For the first time, we combine environmental forecasting with stochastic control and risk theory, and employ fundamental partial differential equations (PDEs) and efficient level-set solutions for exact reachability and path planning.

## Progress-to-date: Multi-Resolution Modeling & PDE-based Planning

- High-resolution bathymetry
- 100 optimized vertical levels
- TPX09-Atlas tidal forcing
- Atm. forcing: NCEP CFS (1/5°)
- 1/12° HYCOM initial and open boundary conditions



## Applications of our Modeling and PDE-based Planning

**Optimal Algae Harvesting**  
[Bhabra et al., 2020]

**Transport & distribution**  
(Image credit: Wikipedia)

**Naval operations**

**Acoustic surveillance**  
[Ali et al., 2019]

**Communications & cables**  
(Image credit: OpenStreetMaps/Wikipedia)

**Search & rescue**  
[Serra et al., 2020]

**Lakshadweep Island Fisheries**  
[Gupta et al., 2019]

**Plastic pollution**  
[Lermusiaux et al., 2019]

**Planning for Autonomous Undersea Vehicles** [Subramani et al., 2017]

**Optimal Safe Tanker Path: Boston - Houston** [Lermusiaux et al., 2017]

## Acknowledgements and Collaborators

- We are very grateful to the MIT Portugal Program/MIT for their support
- We thank our collaborators: Profs. D. Hart, J. Leonard, D. Newman, and J. Peraire (all of MIT), Prof. J. Tasso de Figueiredo Borges de Sousa (Porto Univ.) and all our other Portuguese colleagues

## References

Ali, W.H., M.S. Bhabra, P.F.J. Lermusiaux, A. March, J.R. Edwards, K. Rimpau, and P. Ryu, 2019. *Stochastic Oceanographic-Acoustic Prediction and Bayesian Inversion for Wide Area Ocean Floor Mapping*. In: OCEANS '19 MTS/IEEE Seattle, 27-31 October 2019.

Bhabra, M.S., M.M. Doshi, B.C. Koenig, P.J. Haley, Jr., C. Mirabito, P.F.J. Lermusiaux, C.A. Goudey, J. Curcio, D. Manganelli, and H. Goudey, 2020. *Optimal Harvesting with Autonomous Tow Vessels for Offshore Macroalgae Farming*. In: OCEANS '20 IEEE/MTS, 5-30 October 2020.

Gupta, A., P.J. Haley, D.N. Subramani, and P.F.J. Lermusiaux, 2019. *Fish Modeling and Bayesian Learning for the Lakshadweep Islands*. In: OCEANS '19 MTS/IEEE Seattle, 27-31 October 2019.

Lermusiaux, P.F.J., D.N. Subramani, J. Lin, C.S. Kulkarni, A. Gupta, A. Dutt, T. Lolla, P.J. Haley Jr., W.H. Ali, C. Mirabito, and S. Jana, 2017. *A Future for Intelligent Autonomous Ocean Observing Systems*. The Sea. Volume 17, The Science of Ocean Prediction, Part 2, J. Marine Res. 75(6), pp. 765-813.

Lermusiaux, P.F.J., M. Doshi, C.S. Kulkarni, A. Gupta, P.J. Haley, Jr., C. Mirabito, F. Trotta, S.J. Levang, G.R. Flierl, J. Marshall, T. Peacock, and C. Noble, 2019. *Plastic Pollution in the Coastal Oceans: Characterization and Modeling*. In: OCEANS '19 MTS/IEEE Seattle, 27-31 October 2019.

Lermusiaux, P.F.J., P.J. Haley, Jr., C. Mirabito, W.H. Ali, M. Bhabra, P. Abbot, C.-S. Chiu, and C. Emerson, 2020. *Multi-resolution Probabilistic Ocean Physics-Acoustics Modeling: Validation in the New Jersey Continental Shelf*. In: OCEANS '20 IEEE/MTS, 5-30 October 2020.

Lermusiaux, P.F.J., C. Mirabito, P.J. Haley, Jr., W.H. Ali, A. Gupta, S. Jana, E. Dorfman, A. Laferriere, A. Kofford, G. Shepard, M. Goldsmith, K. Heaney, E. Coelho, J. Boyle, J. Murray, L. Freitag, and A. Morozov, 2020. *Real-time Probabilistic Coupled Ocean Physics-Acoustics Forecasting and Data Assimilation for Underwater GPS*. In: OCEANS '20 IEEE/MTS, 5-30 October 2020.

Serra, M., P. Sathe, I. Rypina, A. Kirincich, S.D. Ross, P.F.J. Lermusiaux, A. Allen, T. Peacock, and G. Haller, 2020. *Search and Rescue at Sea Aided by Hidden Flow Structures*. Nature Communications 11, 1-7.

Subramani, D. N., P. F. J. Lermusiaux, P.J. Haley, Jr., C. Mirabito, S. Jana, C. S. Kulkarni, A. Girard, D. Wickman, J. Edwards, J. Smith, 2017. *Time-Optimal Path Planning: Real-Time Sea Exercises*. In: Oceans '17 MTS/IEEE Aberdeen, 1-10, 19-22 June 2017.

Other publications available from: <http://mseas.mit.edu/publications>