

7/26/05:

Today we have 4 realizations from section 1: afternoon of Jul 26, morning and afternoon of Jul27, and morning of Jul28.

**Optimal: points=30, threshold=1000 for afternoon of Jul 26**

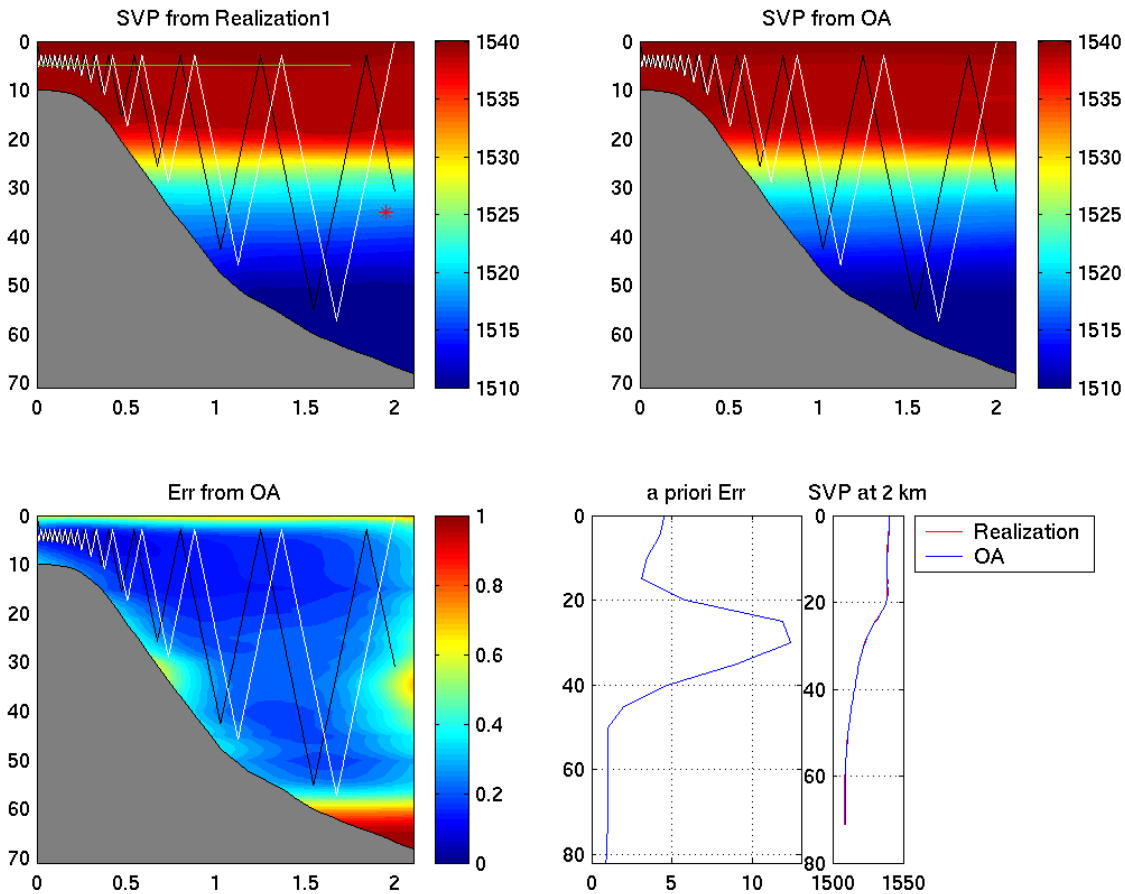


Figure 55: Yoyo control implementation. Afternoon 7/26/05. true\_sound\_faf05\_jul26\_06\_day.5\_2\_sec1.mat. Black line is the forward path; White line is the backward path. Note that to avoid bottom AUV turns around at 5 m above bottom.

**Optimal: points=30, threshold=1000 for morning of Jul 27**

**Optimal: points=30, threshold=1000 for afternoon of Jul 27**

**Optimal: points=30, threshold=1000 for morning of Jul 28**

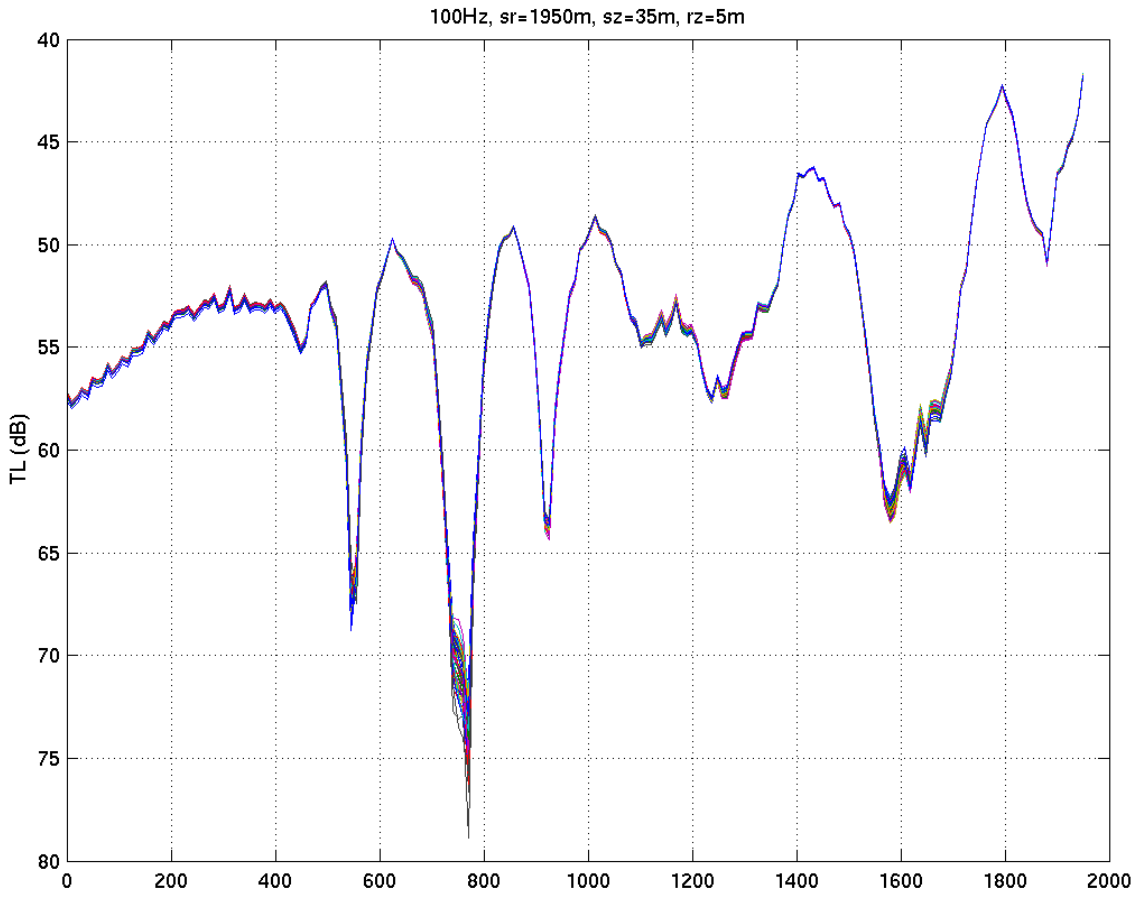


Figure 56: Afternoon 7/26/05. true\_sound\_faf05\_jul26\_06\_day.5\_2\_sec1.mat.

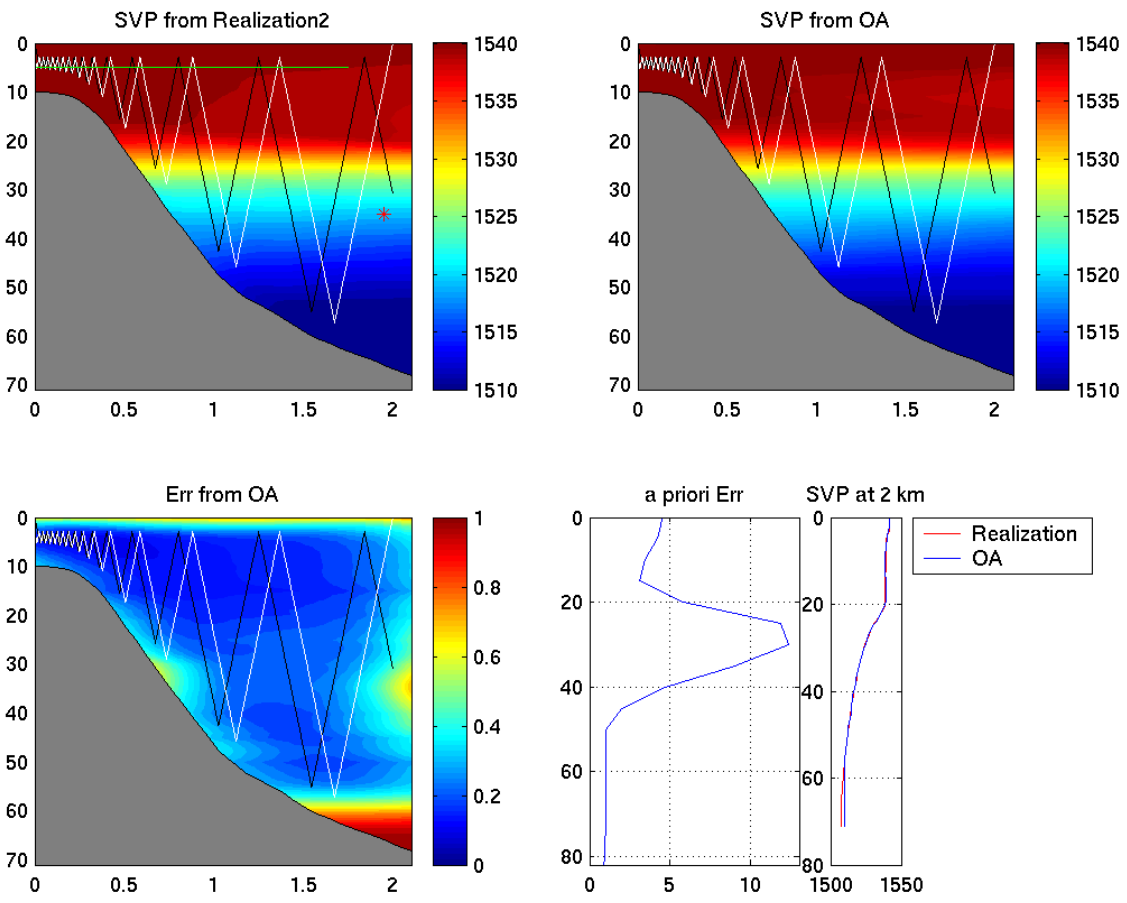


Figure 57: Yoyo control implementation. Morning 7/27/05. true\_sound\_faf05\_jul26\_06\_day.5\_2\_sec1.mat. Black line is the forward path; White line is the backward path. Note that to avoid bottom AUV turns around at 5 m above bottom.

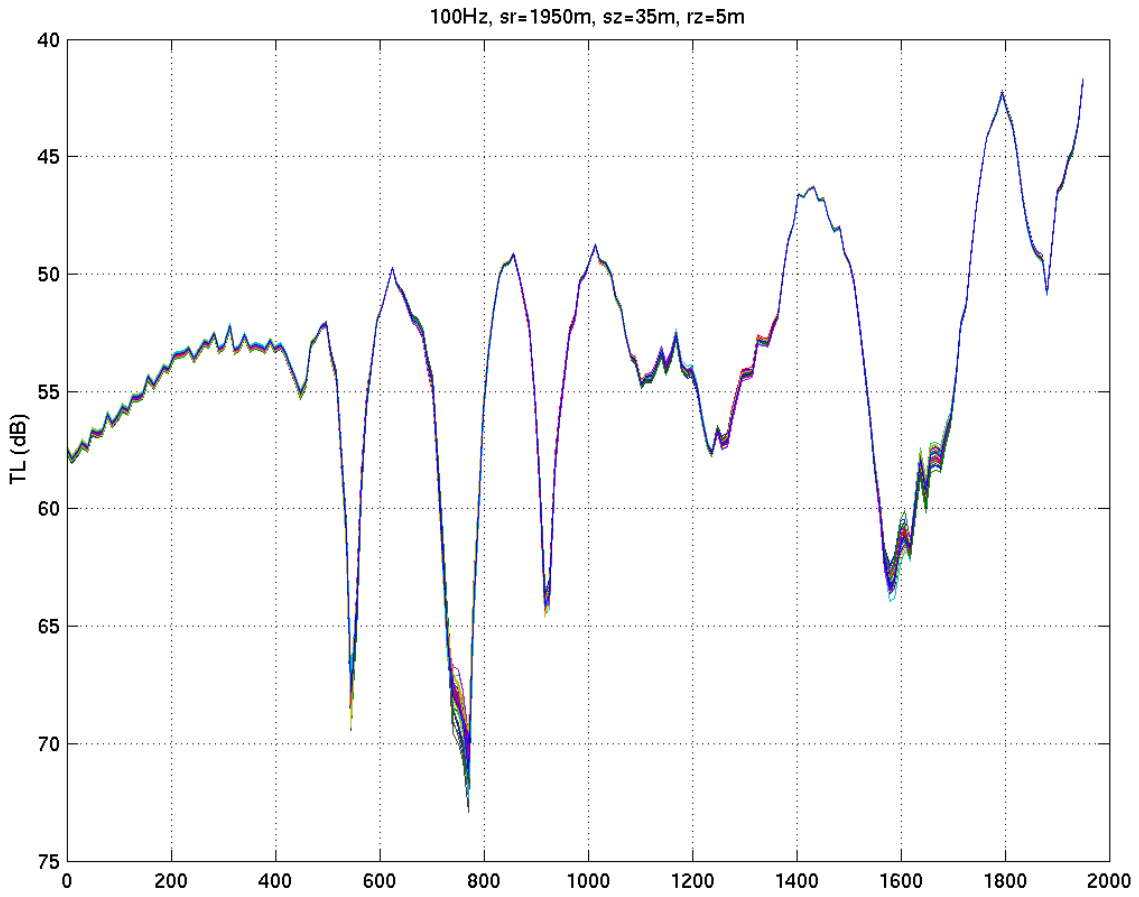


Figure 58: Morning 7/27/05. true\_sound\_faf05\_jul26\_06\_day.5\_2\_sec1.mat.

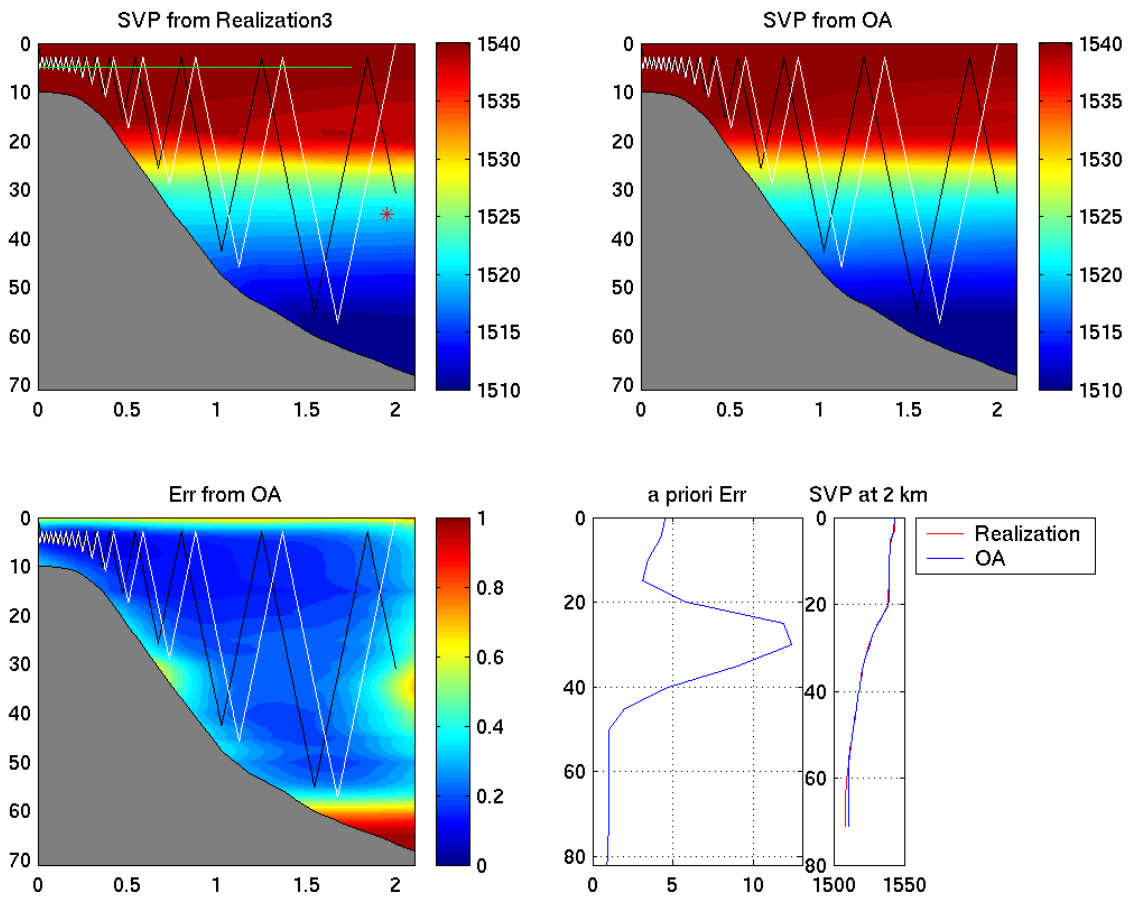


Figure 59: Yoyo control implementation. Afternoon 7/27/05. true\_sound\_faf05\_jul26\_06\_day.5\_2\_sec1.mat. Black line is the forward path; White line is the backward path. Note that to avoid bottom AUV turns around at 5 m above bottom.

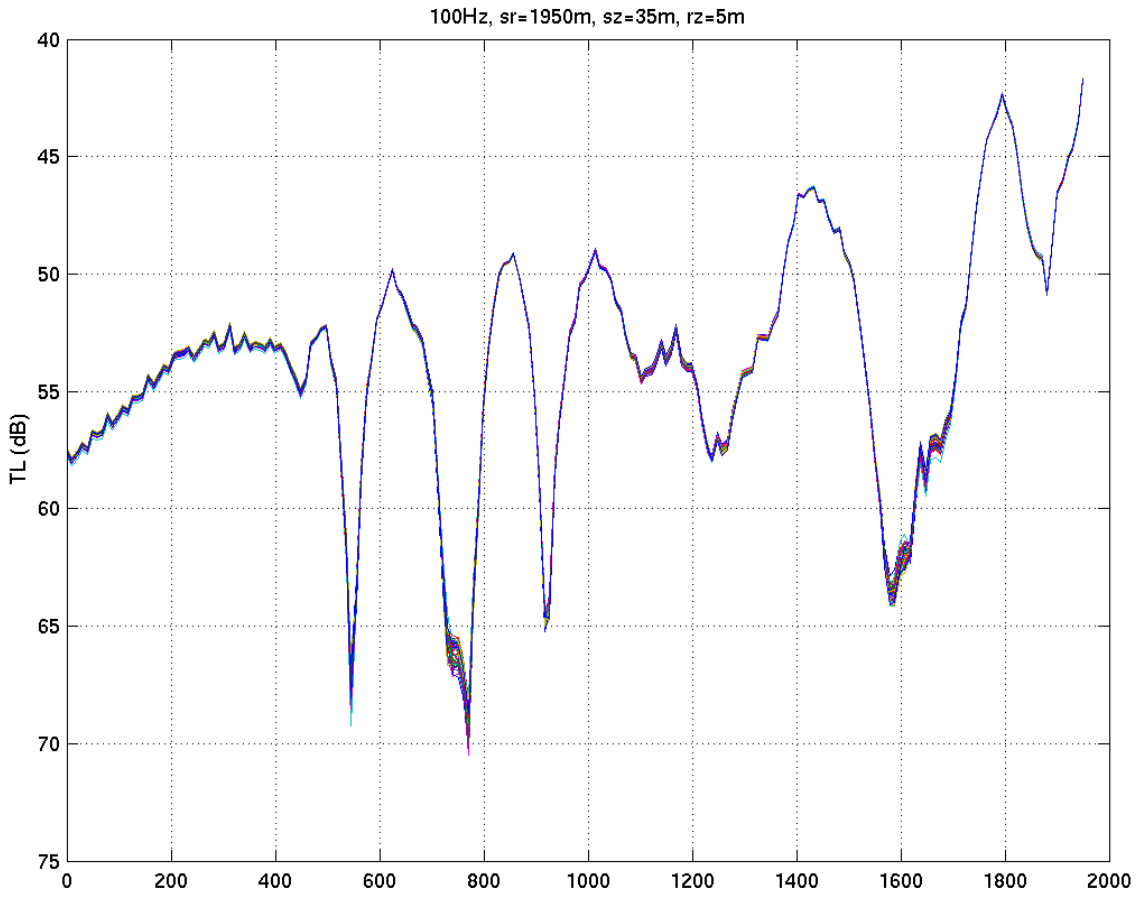


Figure 60: Afternoon 7/27/05. true\_sound\_faf05\_jul26\_06\_day.5\_2\_sec1.mat.

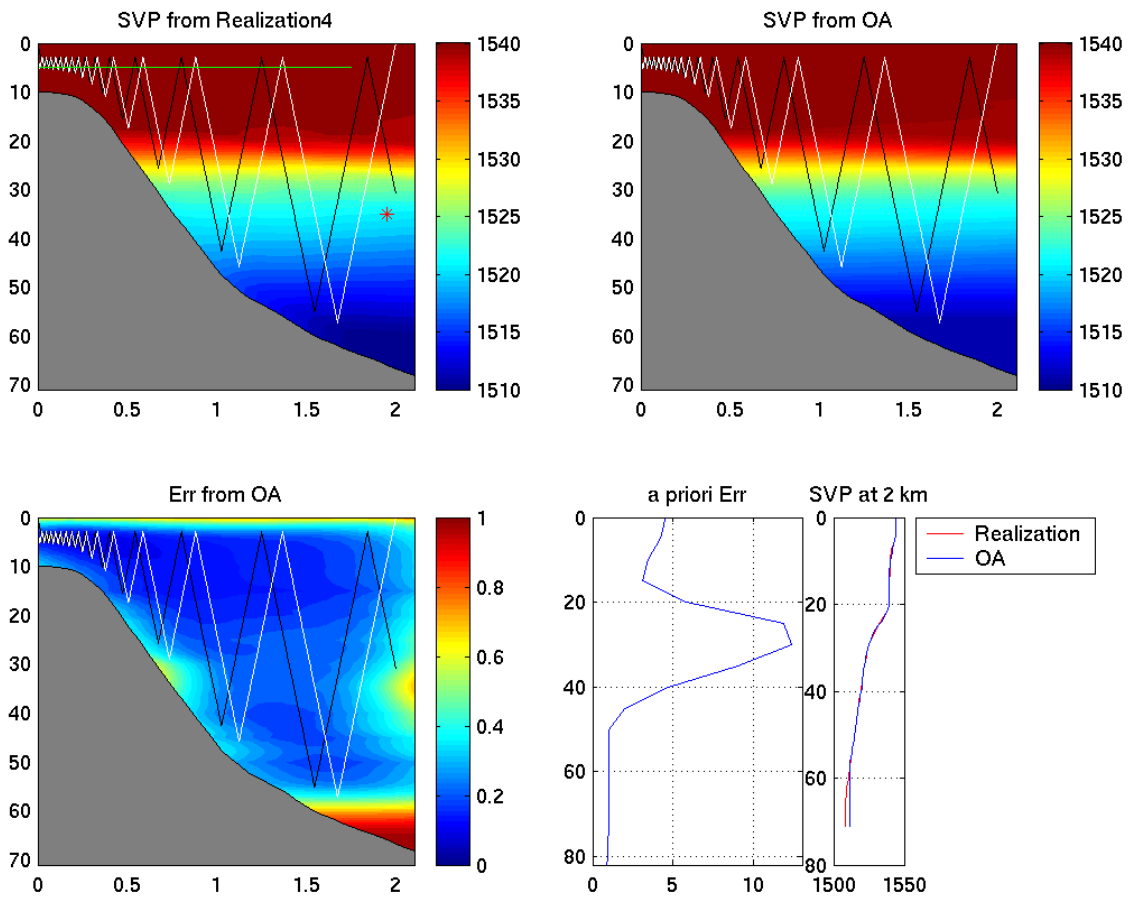


Figure 61: Yoyo control implementation. Morning 7/28/05. true\_sound\_faf05\_jul26\_06\_day.5\_2\_sec1.mat. Black line is the forward path; White line is the backward path. Note that to avoid bottom AUV turns around at 5 m above bottom.

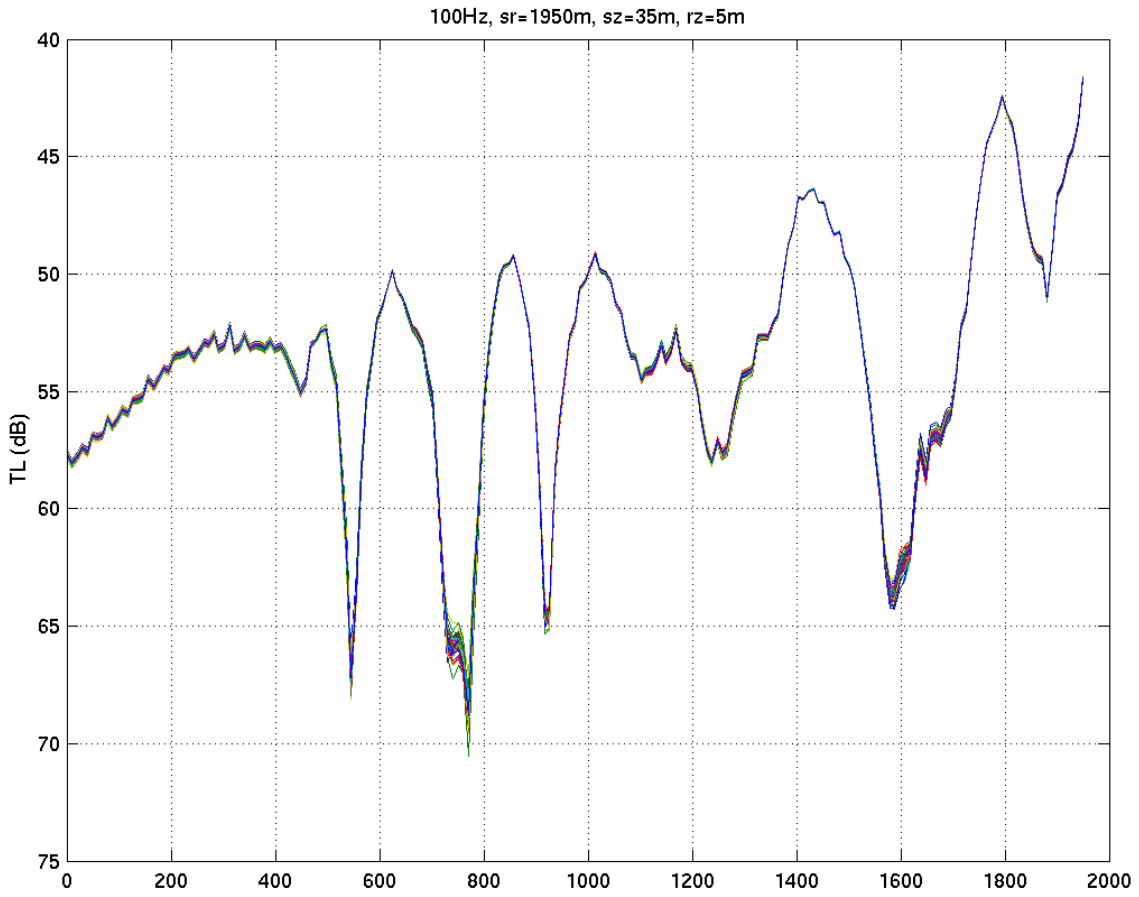


Figure 62: Morning 7/28/05. true\_sound\_faf05\_jul26\_06\_day.5\_2\_sec1.mat.



# FAF-05 (run 139)

MREA03/BP03 29-31 May 2003 CTD; 25,26Jul2005 SST; LNM(250m);  
 2005 ALADIN Winds; FNMOC net heat flux & E-P  
 1.50 Day Forecast : 27 Jul 2005

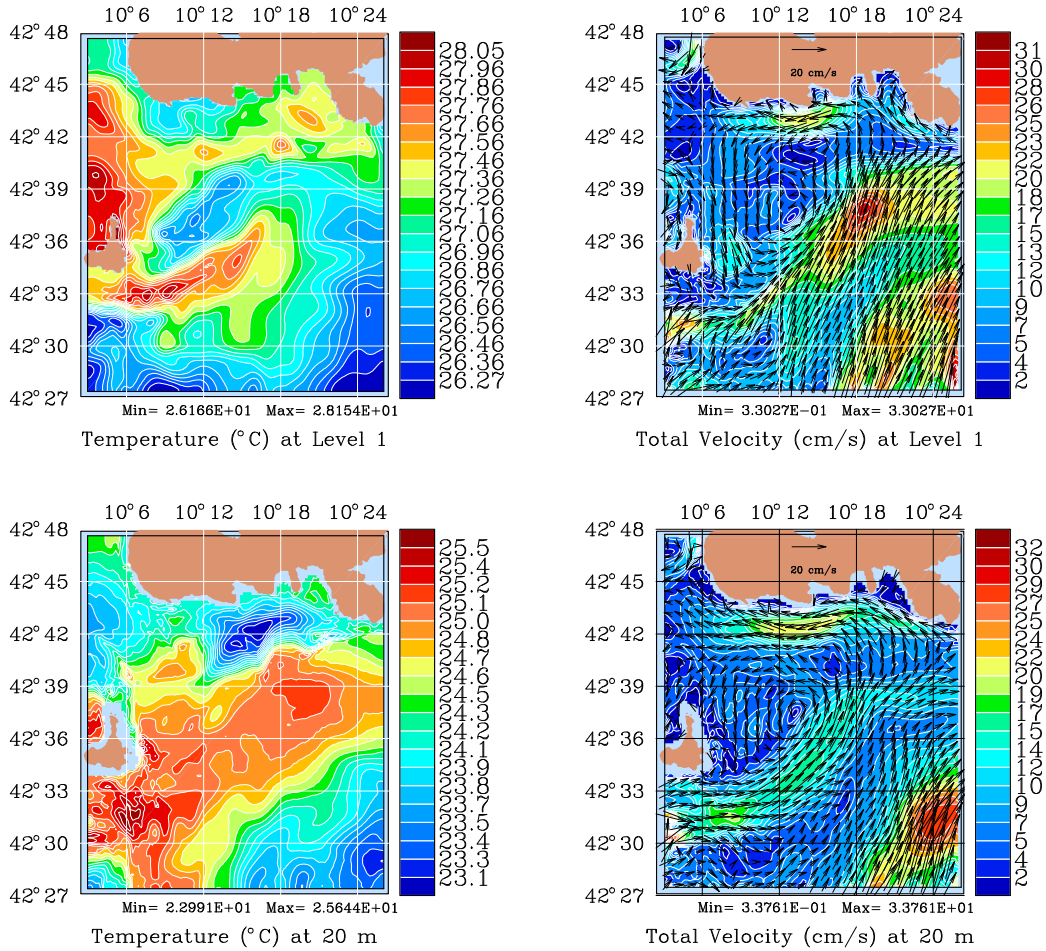


Figure 63: Temperature and current fields at 0 and 20m, for 7/27/05 afternoon. Elba area.

# FAF-05 (run 139)

MREA03/BP03 29-31 May 2003 CTD; 25,26Jul2005 SST; LNM(250m);  
 2005 ALADIN Winds; FNMOC net heat flux & E-P  
 2.00 Day Forecast : 28 Jul 2005

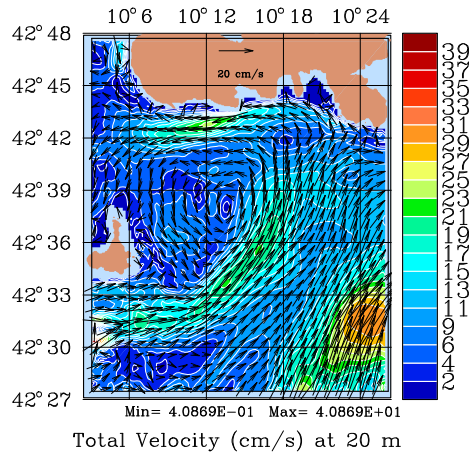
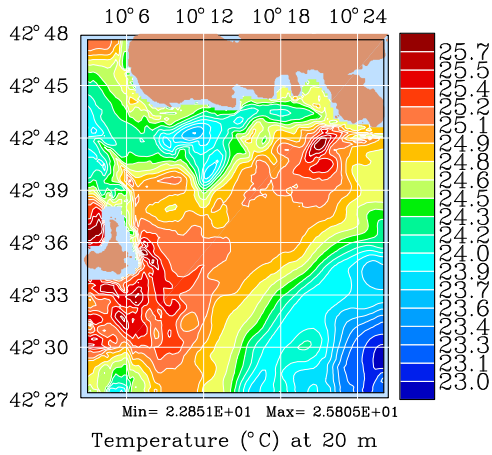
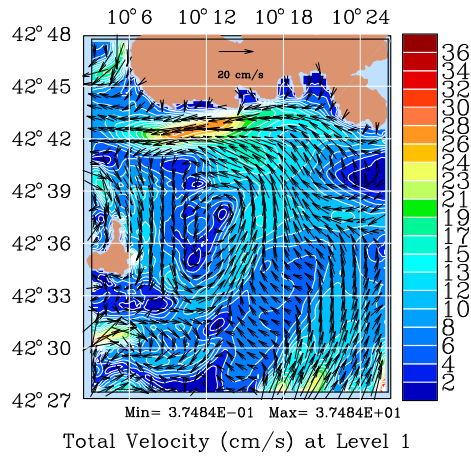
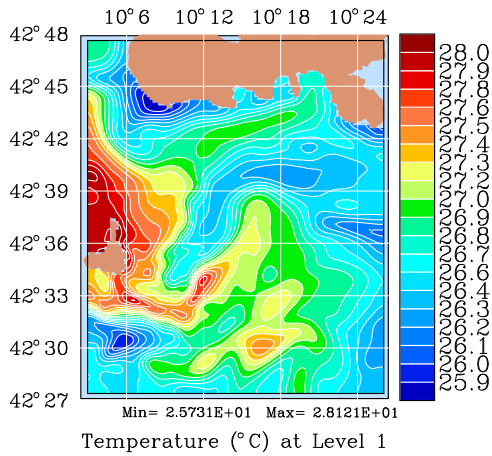


Figure 64: Temperature and current fields at 0 and 20m, for 7/28/05 morning. Elba area.